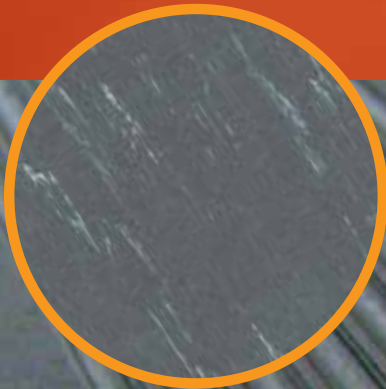


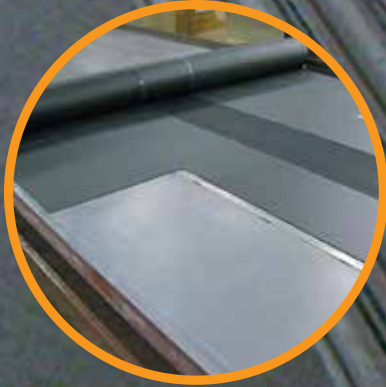
KORO-TRANS™ PRODUCTS

KORO-TRANS™

One-Piece Floors



Industry Standard Colors



Full Width Construction
Available in any configuration



Easy to Order

KORO-TRANS™ One-Piece Floors exceed ADA and OSHA requirements and are Self Extinguishing when tested in accordance with FMVSS 302 paragraph S4.3(b).

KORO-TRANS™ One-Piece Floors...

Better Performance By Design

KORO-TRANS™ One-Piece Floors.

Great Looks and the Best Moisture Barrier in the Industry

KORO-TRANS™ ONE-PIECE FLOORING

KORO-TRANS™ One Piece Flooring is designed to meet the demands of today's transit applications. With One-Piece Flooring, installation is simple! It eliminates the need for trim providing a more attractive appearance. Once installed, it is virtually impervious to moisture penetration.

KORO-TRANS™ is manufactured from proprietary polymeric formulations. KORO-TRANS™ products are resistant to moisture, UV, and ozone degradation. They exhibit exceptional physical properties that meet or exceed generally accepted industry standards including FMVSS 302, OSHA, and ADA.

- Highly Resistant to wear
- Absorbs Sound
- Easy to clean and maintain



- Provides water-proof protective barrier
- Perfect for wheel chair applications



Typical Specification KORO-TRANS™ One-Piece Floors

The subfloor shall be covered with elastomeric transit flooring. The floor covering shall be resistant to deterioration due to exposure to ultraviolet radiation, ozone, and moisture. The floor covering shall be manufactured and installed as a single piece extending from one side of the bus to the other and from the front of the bus to the rear. The Floor covering shall be abrasion resistant and slip resistant, have a minimum coefficient of friction of 0.85 as measured under ASTM D 1894, resist fading, cracking and hardening due to ultraviolet aging throughout the service period and shall be flame resistant with a rating of self-extinguishing (a burn rate of 0.1 mm or less) when tested in accordance with FMVSS 302, paragraph S4.3(b). The floor covering shall be bonded to the plywood subfloor using water borne acrylic emulsion, or other approved adhesive. The adhesive shall be applied to the entire plywood subfloor. The installed flooring shall be rolled with a heavy floor roller to ensure intimate contact between the adhesive and the flooring material.

Color Options

Flooring is available in industry-standard colors: Black, Blue, Grey, Green, Light Grey, Tan, Astra Black, Astra Grey

Design Flexibility

KORO-TRANS™ One-Piece Floors are manufactured and installed as a single piece in any configuration including off-set seating and full rib requirements.

For sample or additional product information contact KORO-TRANS™ Transit Products Customer Service at ...

KORO-TRANS™ PRODUCTS

ProFusion Industries
822 Kumho Drive
Fairlawn, OH 44333

Tel 800-938-2858
Fax 330 668-7705

www.korotrans.com

Made in USA

